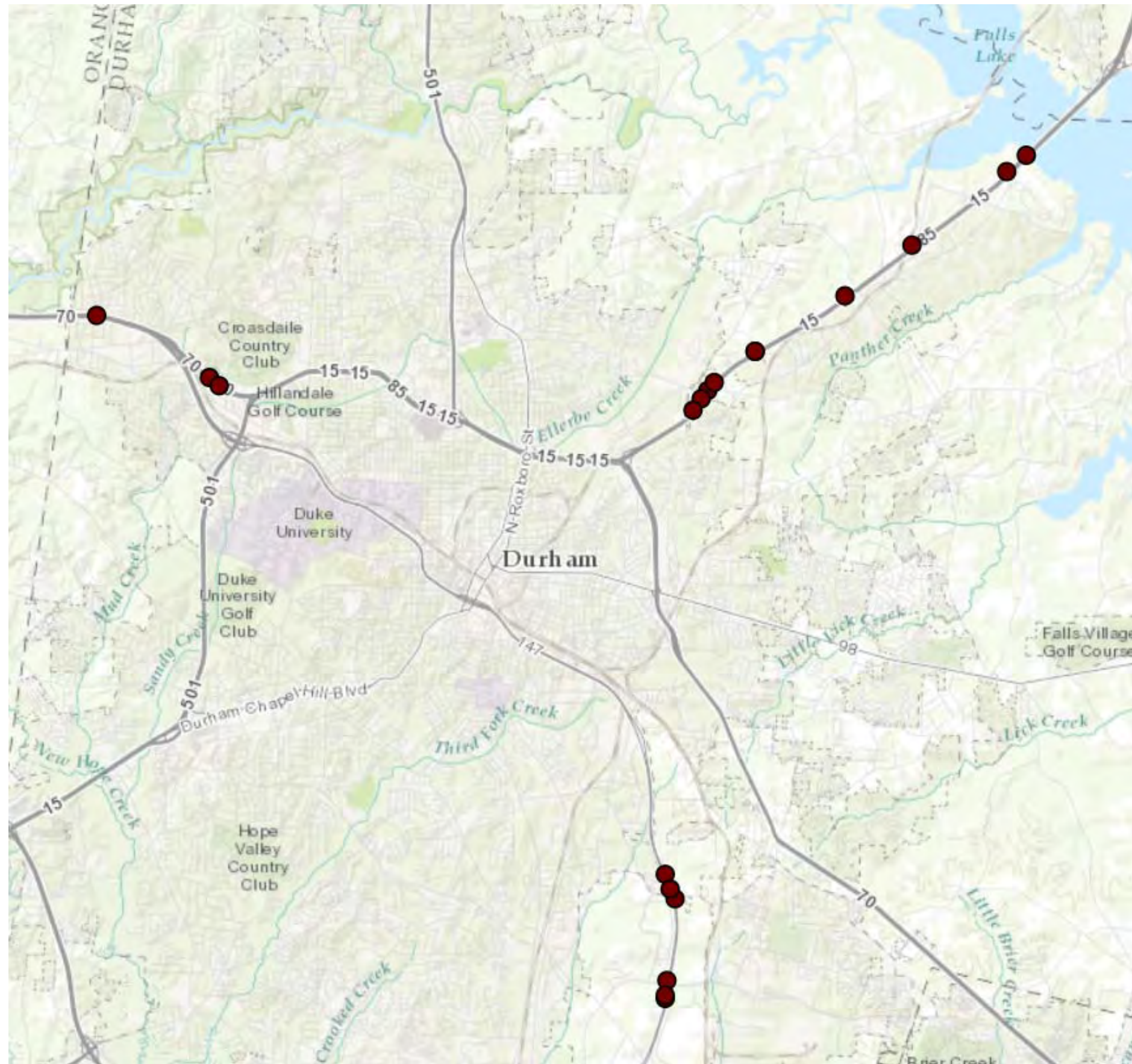


DE00170 W-5601HZ Vicinity Map - Sheet 3



<b>W-5601HZ Division 5 Remove and Replace Guardrail End Units</b>						
<b>County</b>	<b>Route</b>	<b>Milepost</b>	<b>Lane (NB, etc)</b>	<b>Lt./Rt.</b>	<b>Location</b>	<b>COMMENTS</b>
Durham	NC 147	4.104	NB	Lt	0.2 Miles S of TW Alexander Dr overpass	Existing BCT
Durham	NC 147	5.295	NB	Lt	0.05 Miles S of Ellis Dr underpass	Existing BCT
Durham	NC 147	9.790	SB	Lt	0.25 Miles N of Ellis Rd underpass	Existing MELT
Durham	NC 147	9.975	SB	Lt	0.05 Miles N of Ellis Rd underpass	Existing MELT
Durham	NC 147	11.075	SB	Lt	0.03 Miles N of TW Alexander Dr overpass	Existing MELT
Durham	NC 147	11.245	SB	Lt	0.13 Miles S of TW Alexander Dr overpass	Existing MELT
Durham	I 85	0.314	NB	Rt	I 85 Mile Marker 171.4	Existing BCT
Durham	I 85	1.849	NB	Rt	I 85 Mile Marker 172.9	Existing BCT
Durham	I 85	2.004	NB	Rt	I 85 Mile Marker 173.1 (South side of Cole Mill Rd underpass)	Existing BCT
Durham	I 85	9.129	NB	Rt	I 85 Mile Marker 180.2 (South side of Glenn School Rd overpass)	Existing BCT
Durham	I 85	13.069	NB	Rt	I 85 Mile Marker 184.2 (Southern approach to bridge over Falls Lake)	Existing MELT
Durham	I 85	0.917	SB	Rt	I 85 Mile Marker 184.0	Existing MELT
Durham	I 85	2.336	SB	Rt	I 85 Mile Marker 182.6 (North side of Tom Clark Rd / NS Railroad underpass)	Existing BCT
Durham	I 85	3.319	SB	Rt	I 85 Mile Marker 181.5	Existing BCT
Durham	I 85	4.561	SB	Rt	I 85 Mile Marker 180.3 (South side of Glenn School Rd overpass)	Existing BCT
Durham	I 85	5.177	SB	Rt	I 85 Mile Marker 179.7 (North side of E Club Blvd overpass)	Existing MELT
Durham	I 85	5.293	SB	Rt	I 85 Mile Marker 179.6 (South side of E Club Blvd overpass)	Existing MELT
Durham	I 85	5.414	SB	Rt	I 85 Mile Marker 179.5	Existing MELT
Durham	I 85	5.578	SB	Rt	I 85 Mile Marker 179.3	Existing MELT
Durham	NC 540	0.147	EB	Lt	NC 540 Mile Marker 69.7	Existing MELT

**W-5601HZ Division 5 Remove and Replace Guardrail End Units**

<b>County</b>	<b>Route</b>	<b>Milepost</b>	<b>Lane (NB, etc)</b>	<b>Lt./Rt.</b>	<b>Location</b>	<b>COMMENTS</b>
Durham	I 540	0.076	EB	Lt	I 540 Mile Marker 0.1 (Under fly-over bridge from I 40 E to I 540 E)	Existing MELT
Durham	I 540	0.581	EB	Rt	I 540 Mile Marker 0.6	2 Existing BCT ET's
Durham	I 540	0.398	WB	Rt	I 540 Mile Marker 0.3	Existing MELT
Durham	I 540	0.610	WB	Lt	I 540 Mile Marker 0.1 (Under fly-over bridge from I 40 E to I 540 E)	Existing MELT
Wake	I 540	0.342	EB	Lt	I 540 Mile Marker 0.9	Existing MELT
Wake	I 540	0.578	EB	Rt	I 540 Mile Marker 1.2 (West side of Pleasant Grove Church Rd overpass)	2 Existing BCT ET's
Wake	I 540	1.457	EB	Lt	I 540 Mile Marker 2.1	Existing BCT
Wake	I 540	1.834	EB	Rt	I 540 Mile Marker 2.4	Existing MELT
Wake	I 540	1.980	EB	Rt	I 540 Mile Marker 2.6	Existing MELT
Wake	I 540	2.221	EB	Rt	I 540 Mile Marker 2.8	Existing MELT
Wake	I 540	2.347	EB	Lt	I 540 Mile Marker 2.9	Existing BCT
Wake	I 540	2.758	EB	Lt	I 540 Mile Marker 3.4 (West side of Lumley Rd overpass)	Existing BCT
Wake	I 540	2.949	EB	Rt	I 540 Mile Marker 3.5	Existing MELT
Wake	I 540	3.432	EB	Lt	I 540 Mile Marker 4.0	Existing BCT
Wake	I 540	3.567	EB	Rt	I 540 Mile Marker 4.2 (West side of Glenwood Ave underpass)	Existing BCT
Wake	I 540	3.583	EB	Lt	I 540 Mile Marker 4.2 (West side of Glenwood Ave underpass)	Existing BCT
Wake	I 540	4.638	EB	Lt	I 540 Mile Marker 5.2	Existing MELT
Wake	I 540	5.140	EB	Rt	I 540 Mile Marker 5.7	Existing MELT
Wake	I 540	5.507	EB	Rt	I 540 Mile Marker 6.1	Existing MELT
Wake	I 540	5.809	EB	Lt	I 540 Mile Marker 6.4	Existing MELT
Wake	I 540	7.667	EB	Rt	I 540 Mile Marker 8.3	Existing BCT
Wake	I 540	8.044	EB	Rt	I 540 Mile Marker 8.6	Existing BCT
Wake	I 540	8.507	EB	Lt	I 540 Mile Marker 9.1	Existing MELT
Wake	I 540	8.743	EB	Rt	I 540 Mile Marker 9.3 (West side of Creedmoor Rd underpass)	Existing BCT

<b>W-5601HZ Division 5 Remove and Replace Guardrail End Units</b>						
<b>County</b>	<b>Route</b>	<b>Milepost</b>	<b>Lane (NB, etc)</b>	<b>Lt./Rt.</b>	<b>Location</b>	<b>COMMENTS</b>
Wake	I 540	8.767	EB	Lt	I 540 Mile Marker 9.4 (West side of Creedmoor Rd underpass)	Existing BCT
Wake	I 540	9.546	EB	Lt	I 540 Mile Marker 10.1 (West side of Chandler Dr overpass)	Existing MELT
Wake	I 540	10.155	EB	Rt	I 540 Mile Marker 10.8	Existing MELT
Wake	I 540	10.260	EB	Lt	I 540 Mile Marker 10.9	Existing MELT
Wake	I 540	10.526	EB	Lt	I 540 Mile Marker 11.1 (West side of Six Forks Rd overpass) (*Guardrail posts in Asphalt*)	Existing MELT
Wake	I 540	10.577	EB	Lt	I 540 Mile Marker 11.2 (East side of Six Forks Rd overpass) (*Guardrail posts in Asphalt*)	Existing MELT
Wake	I 540	11.104	EB	Rt	I 540 Mile Marker 11.7	Existing BCT
Wake	I 540	12.385	EB	Lt	I 540 Mile Marker 13.0 (West side of Honeycutt Rd overpass)	Existing MELT
Wake	I 540	12.420	EB	Lt	I 540 Mile Marker 13.0 (East side of Honeycutt Rd overpass)	Existing MELT
Wake	I 540	18.781	EB	Lt	I 540 Mile Marker 19.4 (Western approach to bridge over Neuse River)	Existing MELT
Wake	I 540	25.147	EB	Lt	I 540 Mile Marker 25.7 (Eastbound approach to loop from I 540 E to US 64 E)	Existing MELT
Wake	I 540	0.410	WB	Lt	I 540 Mile Marker 24.8	Existing MELT
Wake	I 540	2.621	WB	Lt	I 540 Mile Marker 22.6 (Eastern approach to bridge over Beaver Dam Creek)	Existing MELT
Wake	I 540	8.400	WB	Lt	I 540 Mile Marker 16.9 (East side of Triangle Town Blvd underpass)	Existing MELT
Wake	I 540	10.877	WB	Lt	I 540 Mile Marker 14.4 (East side of Litchford Rd underpass)	Existing BCT
Wake	I 540	12.286	WB	Lt	I 540 Mile Marker 13.0 (West side of Honeycutt Rd overpass)	Existing MELT
Wake	I 540	12.286	WB	Lt	I 540 Mile Marker 13.0 (West side of Honeycutt Rd overpass)	Existing MELT
Wake	I 540	12.828	WB	Lt	I 540 Mile Marker 12.4	Existing MELT
Wake	I 540	13.416	WB	Rt	I 540 Mile Marker 11.9	Existing BCT
Wake	I 540	14.094	WB	Lt	I 540 Mile Marker 11.2 (East side of Six Forks Rd overpass) (*Guardrail posts in Asphalt*)	Existing MELT
Wake	I 540	14.144	WB	Lt	I 540 Mile Marker 11.1 (West side of Six Forks Rd overpass) (*Guardrail posts in Asphalt*)	Existing MELT
Wake	I 540	14.294	WB	Rt	I 540 Mile Marker 11.0 (West side of Six Forks Rd overpass, WB on-ramp)	Existing BCT
Wake	I 540	15.073	WB	Rt	I 540 Mile Marker 10.3 (East side of Chandler Dr overpass)	Existing BCT
Wake	I 540	15.103	WB	Lt	I 540 Mile Marker 10.3 (East side of Chandler Dr overpass)	Existing BCT
Wake	I 540	15.489	WB	Rt	I 540 Mile Marker 9.9	Existing BCT
Wake	I 540	15.550	WB	Lt	I 540 Mile Marker 9.8	Existing BCT

<b>W-5601HZ Division 5 Remove and Replace Guardrail End Units</b>						
<b>County</b>	<b>Route</b>	<b>Milepost</b>	<b>Lane (NB, etc)</b>	<b>Lt./Rt.</b>	<b>Location</b>	<b>COMMENTS</b>
Wake	I 540	15.811	WB	Lt	I 540 Mile Marker 9.5 (East side of Creedmoor Rd underpass)	Existing BCT
Wake	I 540	16.845	WB	Rt	I 540 Mile Marker 8.4	Existing BCT
Wake	I 540	17.342	WB	Lt & Rt	I 540 Mile Marker 8.0 (East side of Ray Rd overpass)	2 Existing BCT ET's
Wake	I 540	17.563	WB	Rt	I 540 Mile Marker 7.8	Existing BCT
Wake	I 540	18.492	WB	Lt	I 540 Mile Marker 6.8 (East side of Leesville Rd overpass)	Existing MELT
Wake	I 540	18.527	WB	Lt	I 540 Mile Marker 6.7 (West side of Leesville Rd overpass)	Existing MELT
Wake	I 540	18.779	WB	Rt	I 540 Mile Marker 6.6 (West side of Leesville Rd overpass, WB on-ramp)	Existing MELT
Wake	I 540	19.777	WB	Rt	I 540 Mile Marker 5.6	Existing MELT
Wake	I 540	20.842	WB	Lt	I 540 Mile Marker 4.5	Existing MELT
Wake	I 540	20.982	WB	Lt	I 540 Mile Marker 4.4 (East side of Glenwood Ave underpass)	Existing MELT
Wake	I 540	21.635	WB	Rt	I 540 Mile Marker 3.7	Existing MELT
Wake	I 540	21.866	WB	Lt	I 540 Mile Marker 3.5 (East side of Lumley Rd overpass)	Existing MELT
Wake	I 540	22.268	WB	Lt & Rt	I 540 Mile Marker 3.1 (West side of Lumley Rd overpass, WB on-ramp)	1 Existing BCT + 1 Existing MELT
Wake	I 540	22.901	WB	Rt	I 540 Mile Marker 2.4	Existing MELT
Wake	US 1	0.044	NB	Rt	US 1 Mile Marker 85.7 (at Welcome to Wake County Sign)	Existing MELT
Wake	US 1	0.540	NB	Rt	US 1 Mile Marker 86.2	Existing MELT
Wake	US 1	0.815	NB	Rt	US 1 Mile Marker 86.5 (South side of Norfolk Southern R/R Bridge)	Existing MELT
Wake	US 1	1.837	NB	Rt	US 1 Mile Marker 87.5	Existing MELT
Wake	US 1	2.628	NB	Rt	US 1 Mile Marker 88.3	Existing MELT
Wake	US 1	3.279	NB	Rt	US 1 Mile Marker 89.0 (South side of New Hill Holleman Rd overpass, NB off-ramp)	Existing MELT
Wake	US 1	3.935	NB	Rt	US 1 Mile Marker 89.6	Existing MELT
Wake	US 1	5.317	NB	Rt	US 1 Mile Marker 91.0 (South side of Friendship Rd overpass)	Existing MELT
Wake	US 1	6.068	NB	Rt	US 1 Mile Marker 91.7	Existing MELT
Wake	US 1	8.037	NB	Rt	US 1 Mile Marker 93.7 (South side of Old Holly Springs Apex Rd overpass)	Existing MELT

<b>W-5601HZ Division 5 Remove and Replace Guardrail End Units</b>						
<b>County</b>	<b>Route</b>	<b>Milepost</b>	<b>Lane (NB, etc)</b>	<b>Lt./Rt.</b>	<b>Location</b>	<b>COMMENTS</b>
Wake	US 1	8.272	NB	Rt	US 1 Mile Marker 94.0	Existing MELT
Wake	US 1	10.550	NB	Rt	US 1 Mile Marker 96.3 (South side of Ten-Ten Rd overpass)	Existing MELT
Wake	US 1	10.570	NB	Lt	US 1 Mile Marker 96.3 (South side of Ten-Ten Rd overpass)	Existing BCT
Wake	US 1	10.606	NB	Lt	US 1 Mile Marker 96.3 (North side of Ten-Ten Rd overpass)	Existing BCT
Wake	US 1	30.039	SB	Rt	US 1 Mile Marker 98.0 (South side of Tryon Rd underpass, SB on-ramp)	Existing MELT
Wake	US 1	31.692	SB	Rt	US 1 Mile Marker 96.4 (North side of Ten-Ten Rd overpass)	Existing MELT
Wake	US 1	31.706	SB	Lt	US 1 Mile Marker 96.4 (North side of Ten-Ten Rd overpass)	Existing BCT
Wake	US 1	31.741	SB	Lt	US 1 Mile Marker 96.4 (South side of Ten-Ten Rd overpass)	Existing BCT
Wake	US 1	32.332	SB	Rt	US 1 Mile Marker 95.8	Existing MELT
Wake	US 1	33.409	SB	Rt	US 1 Mile Marker 94.6	Existing MELT
Wake	US 1	33.900	SB	Rt	US 1 Mile Marker 94.1	Existing MELT
Wake	US 1	34.185	SB	Rt	US 1 Mile Marker 93.8 (North side of Old Holly Springs Apex Rd overpass)	Existing MELT
Wake	US 1	36.478	SB	Rt	US 1 Mile Marker 91.5	Existing MELT
Wake	US 1	36.884	SB	Rt	US 1 Mile Marker 91.1 (North side of Friendship Rd overpass)	Existing MELT
Wake	US 1	37.384	SB	Rt	US 1 Mile Marker 90.6	Existing MELT
Wake	US 1	38.200	SB	Rt	US 1 Mile Marker 89.8	Existing MELT
Wake	US 1	38.491	SB	Rt	US 1 Mile Marker 89.5	Existing MELT
Wake	US 1	38.841	SB	Rt	US 1 Mile Marker 89.1 (North side of New Hill Holleman Rd overpass)	Existing MELT
Wake	US 1	39.532	SB	Rt	US 1 Mile Marker 88.5	Existing MELT
Wake	US 1	41.640	SB	Rt	US 1 Mile Marker 86.4	Existing MELT
Wake	US 1	42.015	SB	Rt	US 1 Mile Marker 86.0	Existing MELT

**TOTAL EXISTING 350 END UNITS FOR REPLACEMENT = 119**